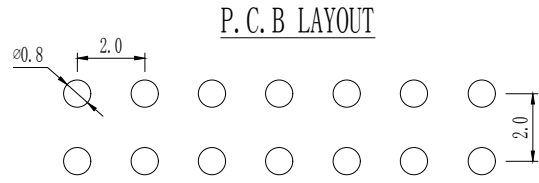
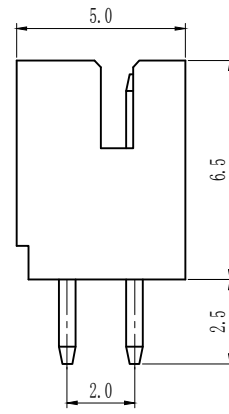
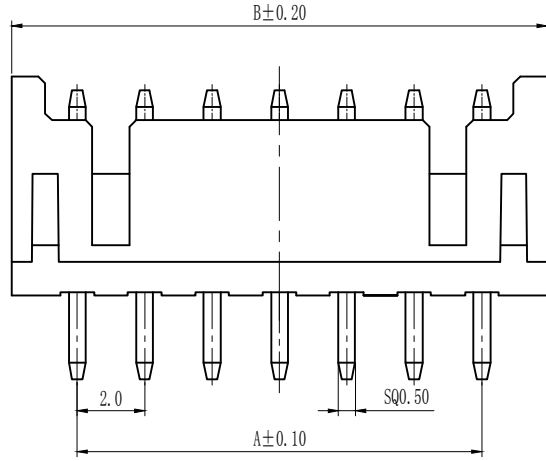
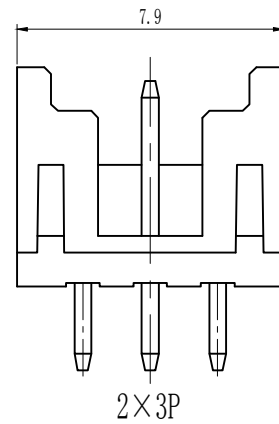
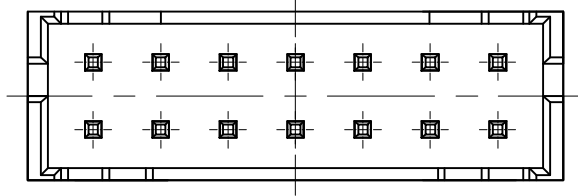


A
B
C
D
E
F
G
H
I

Pin数	尺寸A	尺寸B
4	2.00	5.90
3	4.00	7.90
4	6.00	9.90
5	8.00	11.90
6	10.00	13.90
7	12.00	15.90
8	14.00	17.90
9	16.00	19.90
10	18.00	21.90
11	20.00	23.90
12	22.00	25.90
13	24.00	27.90
14	26.00	29.90
15	28.00	31.90
16	30.00	33.90
17	32.00	35.90
18	34.00	37.90
19	36.00	39.90
20	38.00	41.90



技术参数 SPECIFICATIONS

- ◆ 间距: 2.0 Pitch:2.0
- ◆ 适用线规: AWG#28-#32
Applicable Wire:AWG#28-#32
- ◆ 额定电压: AC, DC, 250V (有效值)
Voltage rating: AC, DC, 250V(rms)
- ◆ 额定电流: 3A, AC, DC (AWG#28)
Current rating:3A, AC, DC (AWG#28)
- ◆ 耐压值: 800V AC/minute
Withstand voltage:800V AC/minute
- ◆ 工作温度: -25℃~+85℃
Working Temp:-25℃~+85℃
- ◆ 绝缘电阻: ≥1000MΩ
Insulation resistance:≥1000MΩ
- ◆ 接触电阻: ≤10mΩ
Contact resistance:≤10mΩ

材料 MATERIAL

- ◆ 绝缘体: 尼龙9T, UL94-V0
Insulator:Nylon94-V0
- ◆ 接触针: 黄铜
Contact PIN:Brass

TOLERANCE:
.X ±XXX
.X ±0.20
.XX ±0.10
ANG.

STO 上海狮拓电子科技有限公司

產品名稱: _____

產品料號: _____

THIRD ANGLE PROJECTION

簽名 _____	客戶確認
日期 _____	
審核 _____	
日期 _____	
<input type="checkbox"/> 承認 _____ 日期 _____	
<input type="checkbox"/> 駁回 _____ 日期 _____	

PHD-2×NA