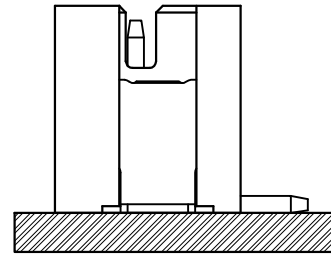
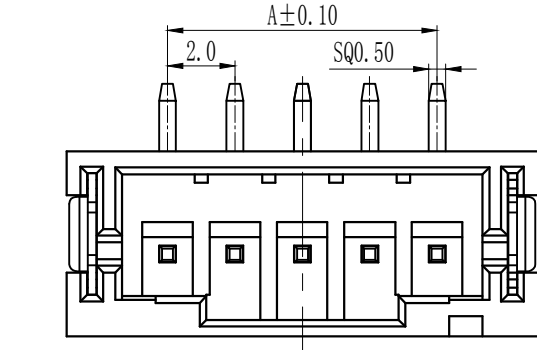
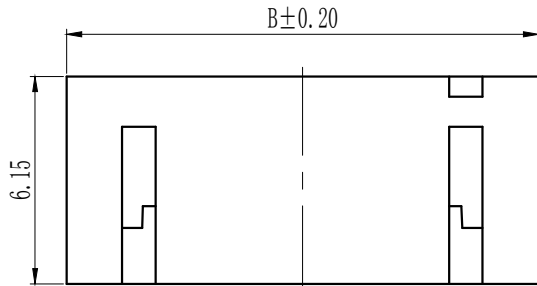


A
B
C
D
E
F
G
H
I

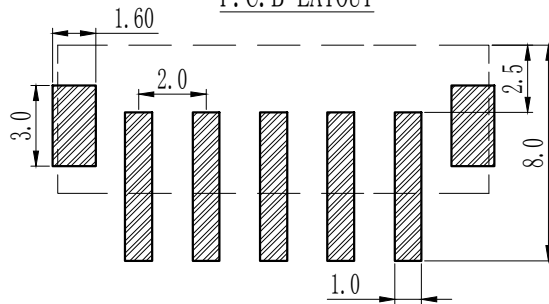
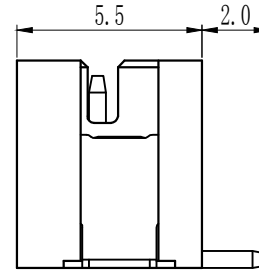
| Pin数 | 尺寸A | 尺寸B |
|------|-------|-------|
| 2 | 2.00 | 8.00 |
| 3 | 4.00 | 10.00 |
| 4 | 6.00 | 12.00 |
| 5 | 8.00 | 14.00 |
| 6 | 10.00 | 16.00 |
| 7 | 12.00 | 18.00 |
| 8 | 14.00 | 20.00 |
| 9 | 16.00 | 22.00 |
| 10 | 18.00 | 24.00 |
| 11 | 20.00 | 26.00 |
| 12 | 22.00 | 28.00 |
| 13 | 24.00 | 30.00 |
| 14 | 26.00 | 32.00 |
| 15 | 28.00 | 34.00 |
| 16 | 30.00 | 36.00 |



Assembly layout



P. C. B LAYOUT



技术参数 SPECIFICATIONS

- ◆ 间距: 2.0 Pitch:2.0
- ◆ 适用线规: AWG#24-#32
Applicable Wire:AWG#24-#32
- ◆ 额定电压: AC, DC, 100V (有效值)
Voltage rating: AC, DC, 100V(rms)
- ◆ 额定电流: 2A, AC, DC (AWG#28)
Current rating:2A, AC, DC (AWG#28)
- ◆ 耐压值: 800V AC/minute
Withstand voltage:800V AC/minute
- ◆ 工作温度: -25℃~+85℃
Working Temp:-25℃~+85℃
- ◆ 绝缘电阻: ≥1000MΩ
Insulation resistance:≥1000MΩ
- ◆ 接触电阻: ≤10mΩ
Contact resistance:≤10mΩ

材料 MATERIAL

- ◆ 绝缘体: 尼龙9T, UL94-V0
Insulator:Nylon94-V0
- ◆ 接触针: 磷铜
Contact PIN:Phosphor Bronze

TOLERANCE:

X. ±XXX

.X ±0.20

.XX ±0.10

ANG.



上海狮拓电子科技有限公司

产品名称:

产品料号:

THIRD ANGLE PROJECTION



签名 _____

日期 _____

审核 _____

日期 _____

客户确认

承認 _____ 日期 _____

取回 _____ 日期 _____

PH-LT-NA