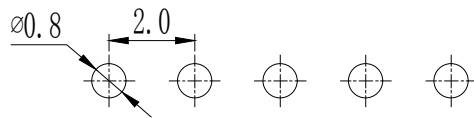
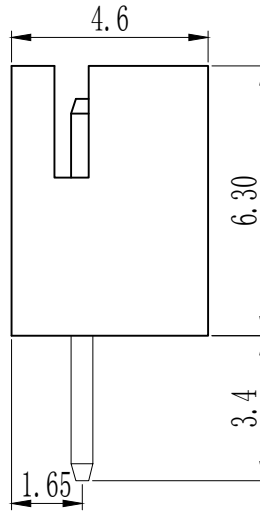
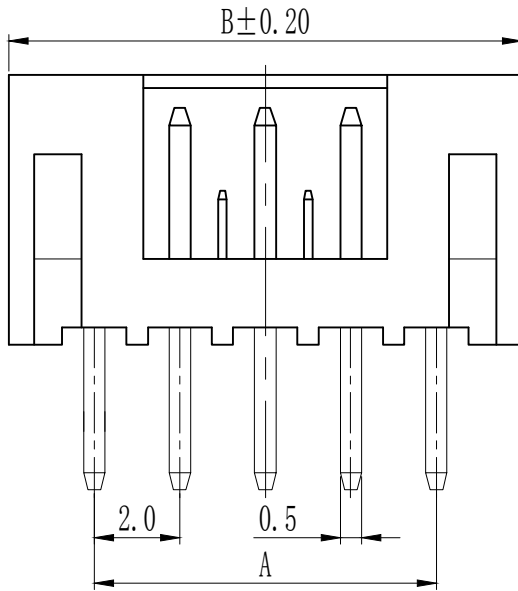
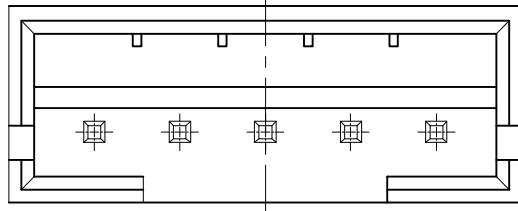


Pin数	尺寸A	尺寸B
2	6.00	6.10
3	4.00	8.10
4	6.00	10.10
5	8.00	12.10
6	10.00	14.10
7	12.00	16.10
8	14.00	18.10
9	16.00	20.10
10	18.00	22.10
11	20.00	24.10
12	22.00	26.10
13	24.00	28.10
14	26.00	30.10
15	28.00	32.10
16	30.00	34.10



P. C. B LAYOUT

技术参数 SPECIFICATIONS

- ◆间距: 2.0 Pitch:2.0
- ◆适用线规: AWG#24-#32  
Applicable Wire:AWG#24-#32
- ◆额定电压: AC, DC, 100V (有效值)  
Voltage rating: AC, DC, 100V(rms)
- ◆额定电流: 2A, AC, DC (AWG#24)  
Current rating:2A, AC, DC (AWG#24)
- ◆耐压值: 800V AC/minute  
Withstand voltage:800V AC/minute
- ◆工作温度: -25℃~+85℃  
Working Temp:-25℃~+85℃
- ◆绝缘电阻: ≥1000MΩ  
Insulation resistance:≥1000MΩ
- ◆接触电阻: ≤10mΩ  
Contact resistance:≤10mΩ

材料 MATERIAL

- ◆绝缘体: 尼龙66, UL94-V0  
Insulator:Nylon66 UL94-V0
- ◆接触针: 黄铜  
Contact PIN:Brass

TOLERANCE:

X. ±XXX

.X ±0.20

.XX ±0.10

ANG.



上海狮拓电子科技有限公司

产品名称:

产品料号:

THIRD ANGLE PROJECTION



签名

日期

审核

日期

客户确认

承认 \_\_\_\_\_ 日期 \_\_\_\_\_

取回 \_\_\_\_\_ 日期 \_\_\_\_\_

PH-NA