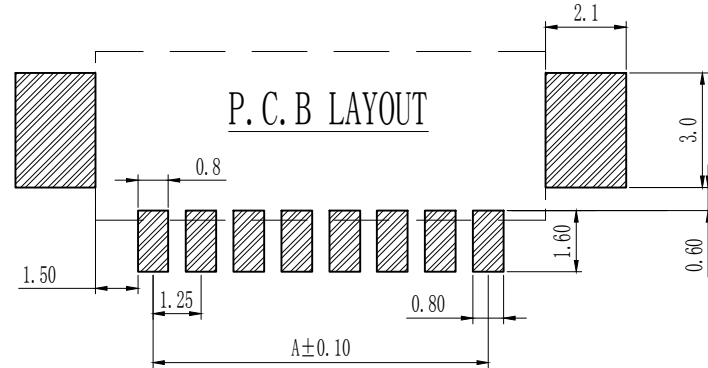
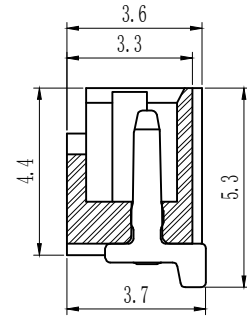
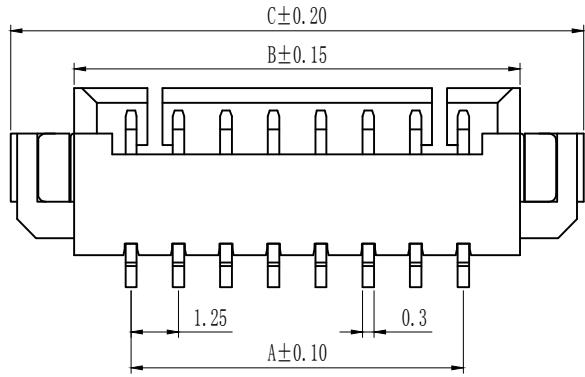
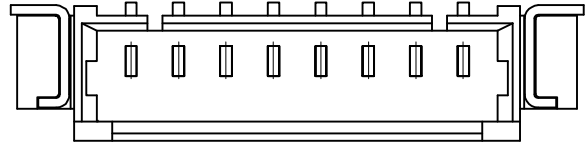


A
B
C
D
E
F
G
H
I

Pin数	尺寸A	尺寸B	尺寸C
2	1.25	4.25	7.55
3	2.50	5.50	8.80
4	3.75	6.75	10.05
5	5.00	8.00	11.30
6	6.25	9.25	12.55
7	7.50	10.50	13.80
8	8.75	11.75	15.05
9	10.00	13.00	16.30
10	11.25	14.25	17.55
11	12.50	15.50	18.80
12	13.75	16.75	20.05
13	15.00	18.00	21.30
14	16.25	19.25	22.55
15	17.50	20.50	23.80
16	18.75	21.75	25.05
17	20.00	23.00	26.30
18	21.25	24.25	27.55



技术参数 SPECIFICATIONS

- ◆间距: 1.25 Pitch:1.25
- ◆极数: 2~16 Poles:2~16
- ◆适用线规: AWG#28-#32
Applicable Wire:AWG#28-#32
- ◆额定电压: AC,DC, 125V (有效值)
Voltage rating: AC,DC, 125V(rms)
- ◆额定电流: 0.5A, AC, DC (AWG#28)
Current rating:0.5A, AC, DC (AWG#28)
- ◆耐压值: 250V AC/minute
Withstand voltage:250V AC/minute
- ◆工作温度: -25℃~+85℃
Working Temp:-25℃~+85℃
- ◆绝缘电阻: ≥1000MΩ
Insulation resistance:≥1000MΩ
- ◆接触电阻: ≤20mΩ
Contact resistance:≤20mΩ

接触件 (TERMINAL)

- ◆材质: 磷铜
Material:Phosphor Bronze

塑胶本体 (HOUSING)

- ◆材质: 尼龙46 (Nylon46), UL94-V0

包装方式 (PACKAGE)

- ◆管装 Pipe Package
- ◆卷装 Winding Package
- ◆编带包装 Reel Package

TOLERANCE:

X. ±XXX

.X ±0.20

.XX ±0.10

ANG.



上海狮拓电子科技有限公司

产品名称:

产品料号:

THIRD ANGLE PROJECTION

签名 _____

日期 _____

审核 _____

日期 _____

客户确认

承认 _____ 日期 _____

取回 _____ 日期 _____

1.25T-1-WT-NA