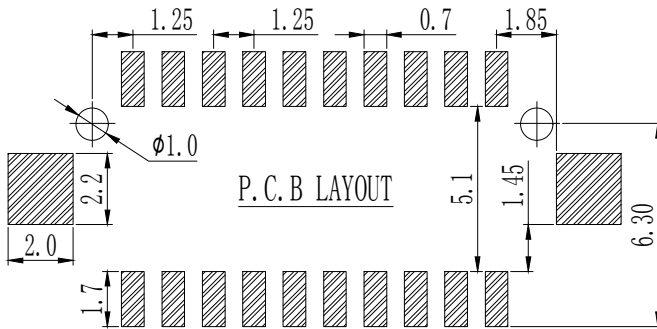
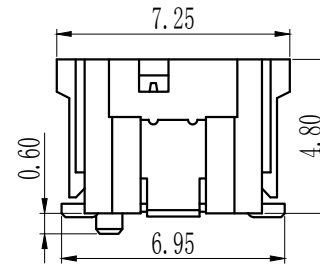
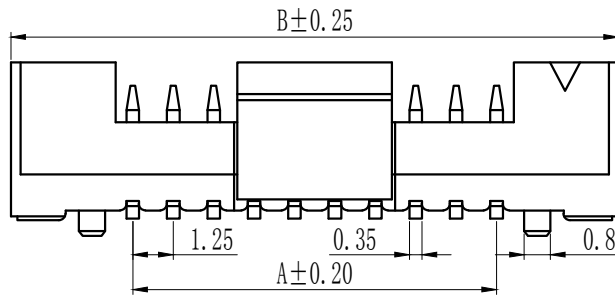
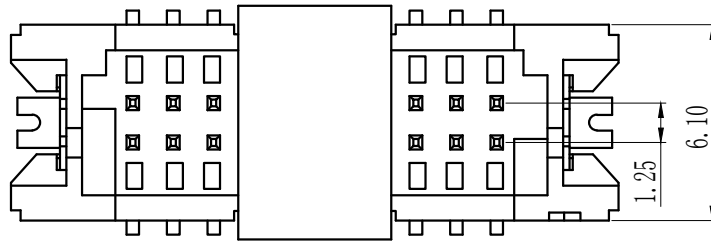


Pin数	尺寸A	尺寸B
5	5.00	12.50
6	6.25	13.75
7	7.50	15.00
8	8.75	16.25
9	10.00	17.50
10	11.25	18.75
11	12.50	20.00
12	13.75	21.25
13	15.00	22.50
14	16.25	23.75
15	17.50	25.00
16	18.75	26.25
17	20.00	27.50
18	21.25	28.75
19	22.50	30.00
20	23.75	31.25
21	25.00	32.50
22	26.25	33.75
23	27.50	35.00
24	28.75	36.25
25	31.25	37.50
26	32.50	38.75
27	33.75	40.00
28	35.00	41.25



技术参数 SPECIFICATIONS

- ◆适用线规: AWG#28-#32
Applicable Wire:AWG#28-#32
- ◆额定电压: AC, DC, 125V (有效值)
Voltage rating: AC, DC, 125V (rms)
- ◆额定电流: 0.5A, AC, DC (AWG#28)
Current rating:0.5A, AC, DC (AWG#28)
- ◆耐压值: 250V AC/minute
Withstand voltage:250V AC/minute
- ◆工作温度: -25℃~+85℃
Working Temp:-25℃~+85℃
- ◆绝缘电阻: ≥100MΩ
Insulation resistance:≥100MΩ
- ◆接触电阻: ≤20mΩ
Contact resistance:≤20mΩ

材料 MATERIAL

- ◆绝缘体: 尼龙6T, UL94-V0
Insulator:Nylon46, UL94-V0
- ◆接触针: 磷铜
Cobtact PIN:Phosphor bronze
- ◆焊片: 磷铜
Solder tab:Phosphor bronze

TOLERANCE:

X. ±XXX

.X ±0.20

.XX ±0.10

ANG.



上海狮拓电子科技有限公司

产品名称:

产品料号:

THIRD ANGLE PROJECTION



签名 _____

日期 _____

审核 _____

日期 _____

客户确认

承认 _____ 日期 _____

驳回 _____ 日期 _____

1.25T-2 (DF13) -2*NA