

Technical Data

Material:

Pin(outer sleeve):Brass,machined CuZn38Pb2

Plating(outer sleeve):

Tin Plated:2µm/80µm<sup>n</sup>Ni,5µm/200µ<sup>n</sup>Sn

Gold Plated:2µm<sup>n</sup>/80µm<sup>n</sup>Ni,0.8µ<sup>n</sup> gold

Plating(Contact ):2µm/80µ<sup>n</sup>Ni, gold or Tin plated

Insulator:PPS UL94V-0

ClIp(Contact 6 FInger):Beryllium copper,heat teated

Electrical:

Current rating:1Amps/contact max.

Contact resistance:≤4m Ω/contact

Insuiation resistance:≥1000M Ω at V=100V

Operaing voitage:60VAC/DC

Mechanical:

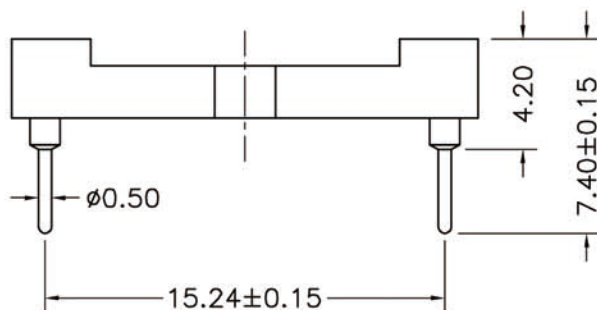
Average Insertion force with steel pin of ø0.432:<90g

Average withdrawal force with steel pin of ø0.432:>25g

Mechanical lige cycle:min 200

Operaling temperature:-40 ° C to+105 ° C

Soldering temperature:+255 ° C



Serial number	No. of Positions	PART NO	A	B
7	20	STOB5-I120XXXX0740B	18.1	16.002
8	24	STOB5-I124XXXX0740B	21.7	19.558
9	28	STOB5-I128XXXX0740B	25.2	23.114
10	40	STOB5-I140XXXX0740B	35.8	33.782
11	42	STOB5-I142XXXX0740B	37.7	35.56
12	48	STOB5-I148XXXX0740B	43.1	40.894
13	52	STOB5-I152XXXX0740B	46.7	44.45
14	56	STOB5-I156XXXX0740B	50.2	48.006
15	64	STOB5-I164XXXX0740B	57.3	55.118
14	68	STOB5-I168XXXX0740B	60.9	48.674

TOLERANCE:

.X ±XXX

.X ±0.20

.XX ±0.10

ANG.



上海狮拓电子科技有限公司

產品名稱:

產品料號:

THIRD ANGLE PROJECTION

簽名 \_\_\_\_\_

日期 \_\_\_\_\_

審核 \_\_\_\_\_

日期 \_\_\_\_\_

客戶確認

承認 \_\_\_\_\_ 日期 \_\_\_\_\_

駁回 \_\_\_\_\_ 日期 \_\_\_\_\_