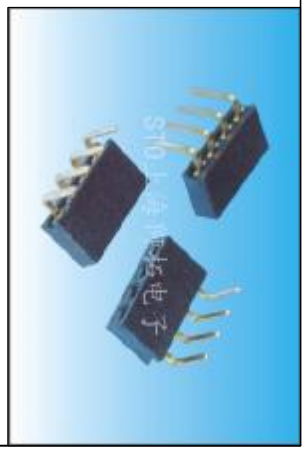
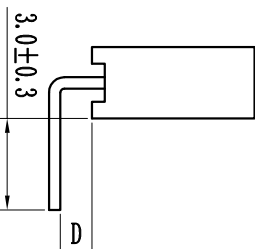
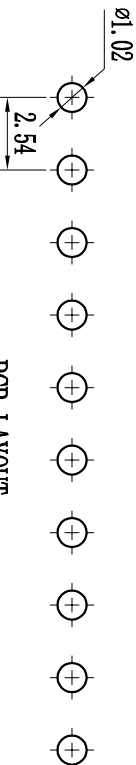
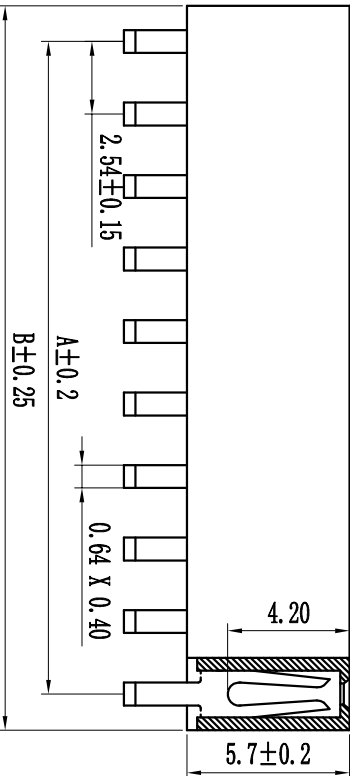
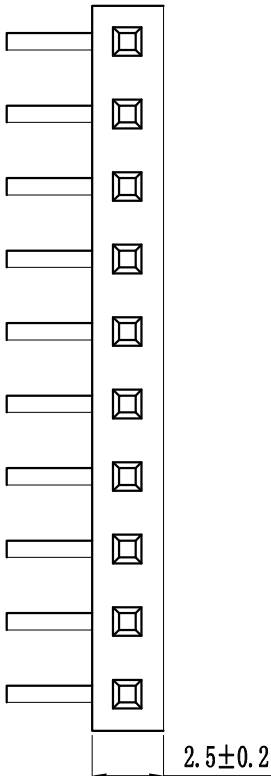


Pin#	尺寸A	尺寸B
1X3	5.08	8.02
1X4	7.62	10.56
1X5	10.16	13.10
1X6	12.70	15.64
1X7	15.24	18.18
1X8	17.78	20.72
1X9	20.32	23.26
1X10	22.86	25.80
1X11	25.40	28.34
1X12	27.94	30.88
1X13	30.48	33.42
1X14	33.02	35.96
1X15	35.56	38.50
1X16	38.10	41.04
1X17	40.64	43.58
1X18	43.18	46.12
1X19	45.72	48.66
1X20	48.26	51.20
1X21	50.80	53.74
1X22	53.34	56.28
1X23	55.88	58.82
1X24	58.42	61.36
1X25	60.96	63.90
1X26	63.50	66.44
1X27	66.04	68.98
1X28	68.58	71.52
1X29	71.12	74.06
1X30	73.66	76.60
1X31	76.20	79.14
1X32	78.74	81.68
1X33	81.28	84.22
1X34	83.82	86.76
1X35	86.36	89.30
1X36	88.90	91.84
1X37	91.44	94.38
1X38	93.98	96.92
1X39	96.52	99.46
1X40	99.06	102.00



**技术规范:**

- 额定电流 : 3AMP
- 适用温度 : -40°C to +105°C
- 接触电阻 : 20mΩ Max
- 绝缘电阻 : 1000MΩ Min
- 耐电压 : AC 1000V
- 绝缘材料 : Polyester (UL94V-0)
- Standard: PA-6T
- 端子材质 : Bronze
- 电镀规范 : Au or Sn Over 50u" Ni

F		a-10-1-2-5p-a-a-s-D-0					
引脚系列	间距	封装	材料	角度	端子	备注	
a-1.0mm	1.0mm	1-单排	PA-6T	S-90°	12.5mm间距25	0-3.0	
b-1.0mm	1.0mm	2-双排	B-90°	R-90°	11.0mm间距18	1-3.0/0.6 (双排)	
c-1.27mm	1.27mm	3-三排	C-90°	D-90°	12.2mm间距22	2-3.0/0.3 (双排)	
d-2.0mm	2.0mm	4-四排	E-90°	F-90°	100-非焊接端子	3-2.8/0.4 (双排)	
e-2.5mm	2.5mm				100-非焊接端子	4-2.6/0.5 (双排)	
f-3.0mm	3.0mm				100-非焊接端子	其它另做说明	
h-5.0mm	5.0mm				S-直插	100-非焊接端子	
i-5.0mm	5.0mm				H-半封装		

F		a-10-1-2-5p-a-a-s-D-0					
引脚系列	间距	封装	材料	角度	端子	备注	
a-1.0mm	1.0mm	1-单排	PA-6T	S-90°	12.5mm间距25	0-3.0	
b-1.0mm	1.0mm	2-双排	B-90°	R-90°	11.0mm间距18	1-3.0/0.6 (双排)	
c-1.27mm	1.27mm	3-三排	C-90°	D-90°	12.2mm间距22	2-3.0/0.3 (双排)	
d-2.0mm	2.0mm	4-四排	E-90°	F-90°	100-非焊接端子	3-2.8/0.4 (双排)	
e-2.5mm	2.5mm				100-非焊接端子	4-2.6/0.5 (双排)	
f-3.0mm	3.0mm				100-非焊接端子	其它另做说明	
h-5.0mm	5.0mm				S-直插	100-非焊接端子	
i-5.0mm	5.0mm				H-半封装		

上海狮拓电子科技有限公司



TOLERANCE:

X	±0.05
XX	±0.10
ANG.	

产品名称:   
 产品料号:   
 THIRD ANGLE PROJECTION

客户确认

姓名: \_\_\_\_\_ 日期: \_\_\_\_\_

审核: \_\_\_\_\_ 日期: \_\_\_\_\_

□ 承制 \_\_\_\_\_ 日期: \_\_\_\_\_

□ 退回 \_\_\_\_\_ 日期: \_\_\_\_\_

2.54mm单排母, 90°, 塑高5.7mm Y型端子

Spec: 2.54mm Female Header, Dual Row, Right Angle

Positions: 1X2"1X40

Plastics Height: 5.7mm