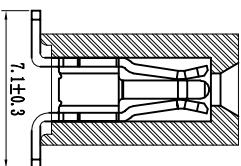
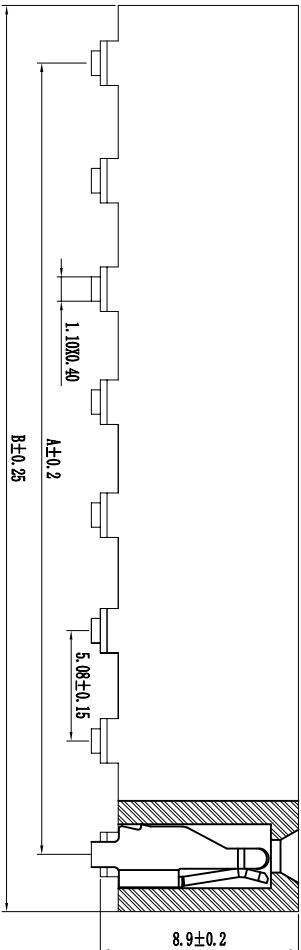
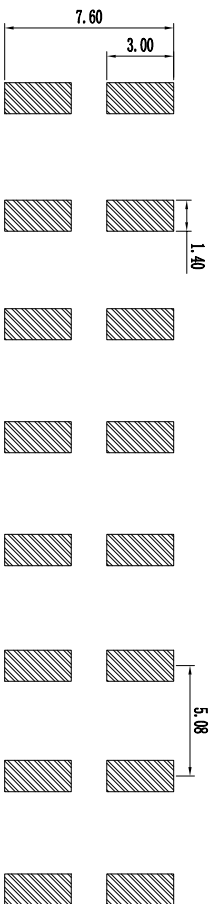


Pin#	尺寸A	尺寸B
1X2	5.08	10.16
1X3	10.16	15.24
1X4	15.24	20.32
1X5	20.32	25.40
1X6	25.40	30.48
1X7	30.48	35.56
1X8	35.56	40.64
1X9	40.64	45.72
1X10	45.72	50.80
1X11	50.80	55.88
1X12	55.88	60.96
1X13	60.96	66.04
1X14	66.04	71.12
1X15	71.12	76.20
1X16	76.20	81.28
1X17	81.28	86.36
1X18	86.36	91.44
1X19	91.44	96.52
1X20	96.52	101.60
1X21	101.60	106.68
1X22	106.68	111.76
1X23	111.76	116.84
1X24	116.84	121.92
1X25	121.92	127.00
1X26	127.00	132.08
1X27	132.08	137.16
1X28	137.16	142.24
1X29	142.24	147.32
1X30	147.32	152.40
1X31	152.40	157.48
1X32	157.48	162.56
1X33	162.56	167.64
1X34	167.64	172.72
1X35	172.72	177.80
1X36	177.80	182.88
1X37	182.88	187.96
1X38	187.96	193.04
1X39	193.04	198.12
1X40	198.12	203.20



PCB LAYOUT



技术规范:  
 额定电流 : 7AMP  
 适用温度 : -40°C to +105°C  
 接触电阻 : 20mΩ Max  
 绝缘电阻 : 1000MΩ Min  
 耐电压 : AC 1000V  
 绝缘材料 : Polyester (UL94V-0)  
 Standard: PBT  
 端子材质 : Bronze  
 电镀规范 : Au or Sn Over 50u" Ni

引脚系列	间距	镀层	焊盘	焊料	焊点	角度	端子	备注
a-10	1.0mm	1-单镀	1-单排	1*90°/50°	B-10"	S-180°	12.5mm间距25	0-3.0
b-11	1.27mm	2-双镀	2-双排	2*90°/50°	B-50"	R-90°	11.0mm间距18	1-3.0/0.6 (双排)
c-12	1.27mm	3-三镀	3-三排	3*90°/50°	C-50"	R-90°	12.5mm间距22	2-3.0/0.3 (双排)
d-2	2.0mm	4-四镀	4-四排	4*90°/50°	D-100"	D-90°	100-非焊接端子	3-2.8/0.4 (双排)
e-2	2.54mm				B-150"	F-150°	100-非焊接端子	4-2.8/0.5 (双排)
f-3	3.0mm				F-300"	S-90°	100-非焊接口端子	其它另做说明
h-5	5.0mm				B-540"		注: 长排时以原料计	

STO 上海狮拓电子科技有限公司

THIRD ANGLE PROJECTION

客户确认

姓名: \_\_\_\_\_ 日期: \_\_\_\_\_  
 审核: \_\_\_\_\_ 日期: \_\_\_\_\_  
 日期: \_\_\_\_\_

承制  退回

TOLERANCE:

X	±0.05
X	±0.20
XX	±0.10

ANG.

产品名称:  
产品料号: