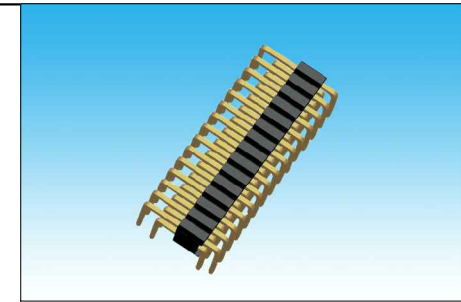
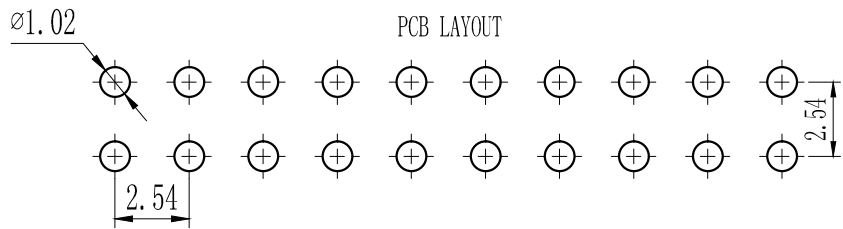
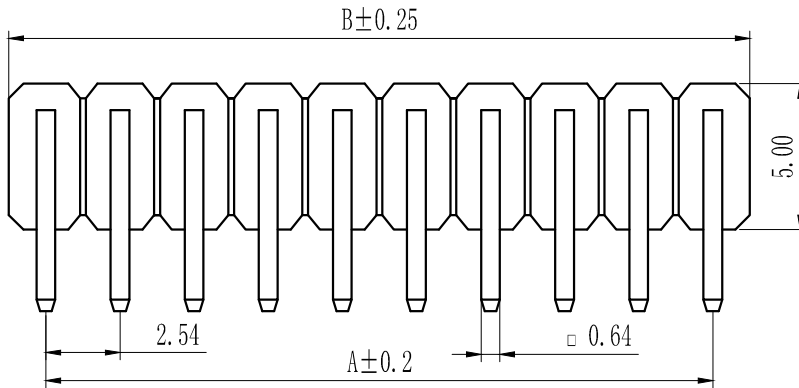
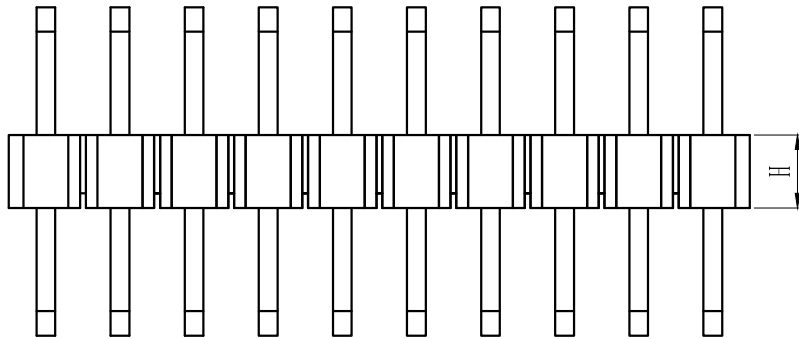
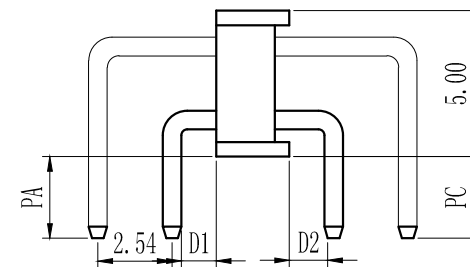


Pin数	尺寸A	尺寸B
1		2.0
2	2.0	4.0
3	4.0	6.0
4	6.0	8.0
5	8.0	10.0
6	10.0	12.0
7	12.0	14.0
8	14.0	16.0
9	16.0	18.0
10	18.0	20.0
11	20.0	22.0
12	22.0	24.0
13	24.0	26.0
14	26.0	28.0
15	28.0	30.0
16	30.0	32.0
17	32.0	34.0
18	34.0	36.0
19	36.0	38.0
20	38.0	40.0
21	40.0	42.0
22	42.0	44.0
23	44.0	46.0
24	46.0	48.0
25	48.0	50.0
26	50.0	52.0
27	52.0	54.0
28	54.0	56.0
29	56.0	58.0
30	58.0	60.0
31	60.0	62.0
32	62.0	64.0
33	64.0	66.0
34	66.0	68.0
35	68.0	70.0
36	70.0	72.0
37	72.0	74.0
38	74.0	76.0
39	76.0	78.0
40	78.0	80.0
41	80.0	82.0
42	82.0	84.0
43	84.0	86.0
44	86.0	88.0
45	88.0	90.0
46	90.0	92.0
47	92.0	94.0
48	94.0	96.0
49	96.0	98.0
50	98.0	100.0
51	100.0	102.0
52	102.0	104.0



技术规范:
 额定电流 : 3.0AMP
 适用温度 : -40°Cto+105°C
 接触电阻 : 20mΩ Max
 绝缘电阻 : 1000MΩ Min
 耐电压 : AC 1000V
 绝缘材料 : Polyester (UL94V-0)
 Standard:PA-6T
 端子材质 : Brass
 电镀规范 : Au or Sn Over 50u" Ni



排针系列	间距	塑高	双塑	单排	PIN位	电镀	材质	角度	备注
a	0.8mm	1.0-10	1-单塑	1-单排	1~40P/50P	A-1u"	A-PBT	S=180°	0-3.0
b	1.0mm	1.5-15	2-双塑	2-双排	2~40/50P	B-3u"	B-PA46	R=90°	1-3.0/6.0(双塑)
c	1.27mm	2.0-20	3-三塑	3-三排	3~40/50P	C-5u"	C-PA6T	M-SMT	2-3.0/3.0(双塑)
d	2.0mm	2.54-254		4-四排	4~40/50P	D-10u"	D-PA9T	Z-Z型	3-2.8/4.0(双塑)
e	2.5mm	4.3-43				E-15u"	E-LCP	Y=135°	4-2.6/3.5(双塑)
f	2.54mm	7.4-74				F-30u"		L=卧式SMT	其它另做说明
g	3.96mm					S-镀锡			
h	5.08mm					H-半金锡			

P a-10-1-2-5p-a-a-s-0

TOLERANCE:

X. ±XXX

.X ±0.20

.XX ±0.10

ANG.



上海狮拓电子科技有限公司

产品名称:

产品料号:

THIRD ANGLE PROJECTION



签名: _____

日期: _____

审核: _____

日期: _____

客户确认

承认 _____ 日期 _____

驳回 _____ 日期 _____

2.54mm双排针, 90°, 单塑
 2.54mm单排针, 90°, 双塑
 Single Row bridge type
 Spec: 2.54mm Pin Head 2650 Single Row, Right Angle
 Positions: 1x1x1x41