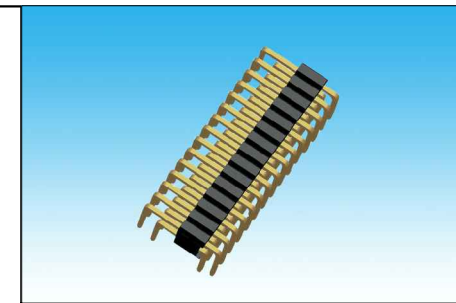
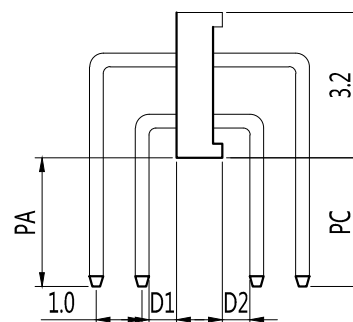
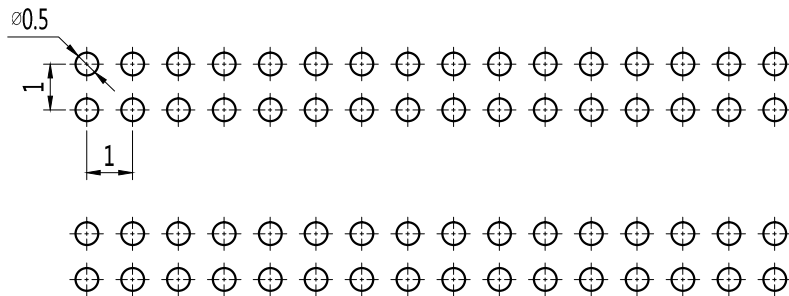
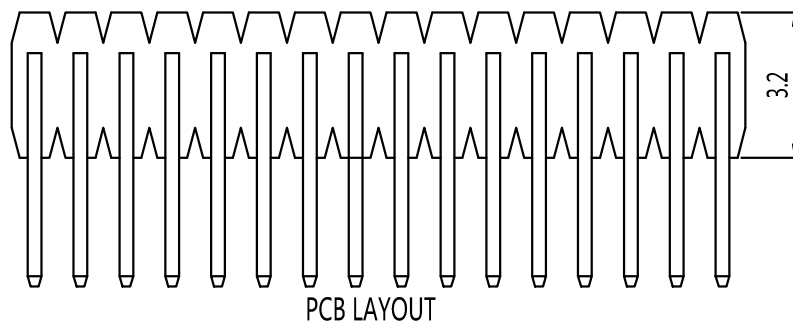
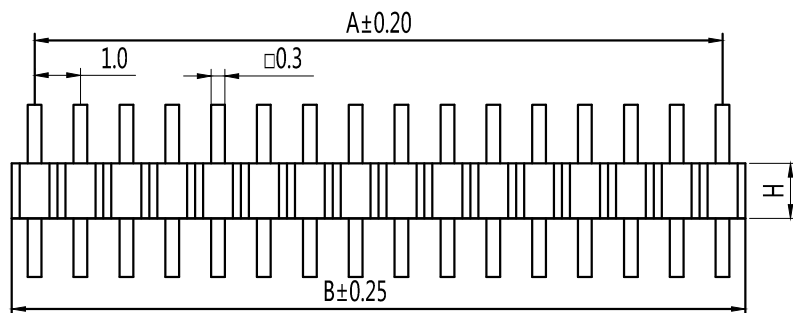


| Pin数 | 尺寸A | 尺寸B |
|------|------|------|
| 2 | 1.0 | 2 |
| 3 | 2.0 | 3.0 |
| 4 | 3.0 | 4.0 |
| 5 | 4.0 | 5.0 |
| 6 | 5.0 | 6.0 |
| 7 | 6.0 | 7.0 |
| 8 | 7.0 | 8.0 |
| 9 | 8.0 | 9.0 |
| 10 | 9.0 | 10.0 |
| 11 | 10.0 | 11.0 |
| 12 | 11.0 | 12.0 |
| 13 | 12.0 | 13.0 |
| 14 | 13.0 | 14.0 |
| 15 | 14.0 | 15.0 |
| 16 | 15.0 | 16.0 |
| 17 | 16.0 | 17.0 |
| 18 | 17.0 | 18.0 |
| 19 | 18.0 | 19.0 |
| 20 | 19.0 | 20.0 |
| 21 | 20.0 | 21.0 |
| 22 | 21.0 | 22.0 |
| 23 | 22.0 | 23.0 |
| 24 | 23.0 | 24.0 |
| 25 | 24.0 | 25.0 |
| 26 | 25.0 | 26.0 |
| 27 | 26.0 | 27.0 |
| 28 | 27.0 | 28.0 |
| 29 | 28.0 | 29.0 |
| 30 | 29.0 | 30.0 |
| 31 | 30.0 | 31.0 |
| 32 | 31.0 | 32.0 |
| 33 | 32.0 | 33.0 |
| 34 | 33.0 | 34.0 |
| 35 | 34.0 | 35.0 |
| 36 | 35.0 | 36.0 |
| 37 | 36.0 | 37.0 |
| 38 | 37.0 | 38.0 |
| 39 | 38.0 | 39.0 |
| 40 | 39.0 | 40.0 |
| 41 | 40.0 | 41.0 |
| 42 | 41.0 | 42.0 |
| 43 | 42.0 | 43.0 |
| 44 | 43.0 | 44.0 |
| 45 | 44.0 | 45.0 |
| 46 | 45.0 | 46.0 |
| 47 | 46.0 | 47.0 |
| 48 | 47.0 | 48.0 |
| 49 | 48.0 | 49.0 |
| 50 | 49.0 | 50.0 |



技术规范:

额定电流: 0.75AMP

适用温度: -40°C to +105°C

接触电阻: 30mΩ Max

绝缘电阻: 1000MΩ Min

耐电压: AC 500V

绝缘材料: Polyester (UL94V-0)

Standard: PA-6T

端子材质: Brass

电镀规范: Au or Sn Over 50u" Ni

| P a-10-1-2-5p-a-a-s-0 | | | | | | | | | |
|-----------------------|----------|--------|------|------|-----------|--------|--------|---------|---------------|
| 排针系列 | 间距 | 塑高 | 双塑 | 单排 | PIN位 | 电镀 | 材质 | 角度 | 备注 |
| | a-0.8mm | 1.0-10 | 1-单塑 | 1-单排 | 1~40P/50P | A-1u" | A-PBT | S=180° | 0-3.0 |
| | b-1.0mm | 1.5-15 | 2-双塑 | 2-双排 | 2~40/50P | B-3u" | B-PA46 | R=90° | 1-3.0/6.0(双塑) |
| | c-1.27mm | | 3-三塑 | 3-三排 | 3~40/50P | C-5u" | C-PA6T | M=SMT | 2-3.0/3.0(双塑) |
| | d-2.0mm | | | 4-四排 | 4~40/50P | D-10u" | D-PA9T | Z=Z型 | 3-2.8/4.0(双塑) |
| | e-2.5mm | | | | | E-15u" | E-LCP | Y=135° | 4-2.6/3.5(双塑) |
| | f-2.54mm | | | | | F-30u" | | L=卧式SMT | 其它另做说明 |
| | g-3.96mm | | | | | S-镀锡 | | | |
| | h-5.08mm | | | | | H-半金锡 | | | |

TOLERANCE:

X. ±XXX

.X ±0.20

.XX ±0.10

ANG.



上海狮拓电子科技有限公司

产品名称:

产品料号:

THIRD ANGLE PROJECTION



签名: _____

日期: _____

审核: _____

日期: _____

客户确认

承认 _____ 日期 _____

驳回 _____ 日期 _____

1.0mm双排针, 90°, 塑高1.0/1.5mm
Spec:1.0mm Pin Header, Dual Row, Bridge Type
Positions: 2x2~2x50
Plastics Height: 1.0/1.5mm